

# A Yard All A-Flutter

**Pollinators and Native  
Plants at My Residential  
Home**

Barbara Hodge

Retired Educator, Beekeeper  
and Native Plant Gardener

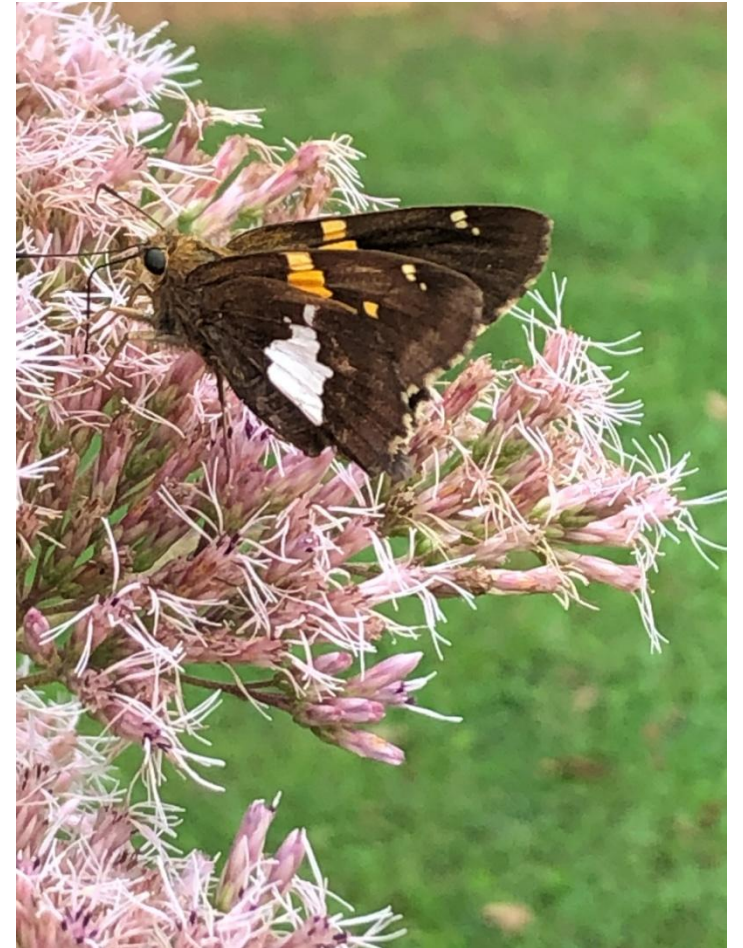


# 11615 Cedar Lane, Hanover County, VA

- Rural road 4 miles from Ashland
- 4/5-acre lot
- Began cultivating native plants in 2017
- Native plant beds and hedge rows with the following growing conditions:
  1. dry full sun
  2. dry shade
  3. moist full sun
  4. moist part sun
- All pictures taken by me with an iphone in this yard
- 125 different species of native plants, and counting...

# Reason for Planting Natives

They support the whole life cycle of bees, birds and butterflies



# Water in front yard trapped by new cement driveway, February 2021



# Rain garden installed April 2021

- Three drainage pipes
- Central basin
- Bioretention soil
- Plants and mulch



# Early rain garden plantings, April & May 2021



# Rain garden after one season of growth October 2021



# Rain Garden after one year, July 2022

- Serviceberry, *Amalanchier canadensis*
- Summersweet, *Clethra alnifolia*
- Inkberry, *Ilex glabra*
- Blue cardinal flower, *Lobelia siphilitica*
- Golden alexander, *Zizia aurea*
- Blue mist flower, *Conoclinium coelestinum*
- Hardy hibiscus, *Hibiscus moscheutos*
- Spotted bee balm, *Monarda punctata*



- Rush, *Juncus effusus*
- Red-tipped Switchgrass, *Panicum virgatum*
- Tussock sedge, *Carex stricta*
- Fox sedge, *Carex vulpinoidea*
- Creek sedge, *Carex amphibola*
- Hollow Joe pye weed, *Eutrochium fistulosum*
- Butterfly weed, *Asclepias tuberosa*



# April Blooms, 2021



Woodland phlox, *Phlox divaricata*  
Foam flower, *Tiarella cordifolia*



Virginia bluebells,  
*Mortensia virginica*



Woods poppy,  
*Stylophorum diphyllum*

# Backyard hedge row at fence in April

- Blackhaw, *Viburnum prunifolium*
- Cutleaf coneflower, *Rudbeckia laciniata*
- Redbud trees, *Cercis canadensis*
- Oakleaf hydrangea, *Hydrangea quercifolia*
- Smooth hydrangea, *Hydrangea arborescens*
- American beautyberry, *Callicarpa americana*
- False aster, *Boltonia asteroides*
- Serviceberry tree, *Amelanchier*
- Wax myrtle, *Morella cerifera*



# Backyard border beside house & deck May 2022

- Spiderwort, *Tradescantia virginiana*(?)
- Winecups, *Callirhoe involucrate*
- Black-eyed susans, *Rudbeckia hirta*
- Wax myrtles, *Myrica cerifera*



# Kid zone for grandchildren in the middle of the fenced back yard



Native plant beds provide a continuous border around the back yard



# May Blooms



Green & gold,  
*Chrysogonum virginianum*



Wild columbine,  
*Aquilegia canadensis*



Golden alexanders,  
*Zizia aurea*

# May Blooms (screened-in porch)

Sundrops,

*Oenothera fruticosa*

Blue wild indigo,

*Baptisia australis*

Sweet pepper bush,

*Clethra alnifolia*



# More Natives in May

- Tickseed, *Coreopsis*
- Thread-leaved tickseed, *Coreopsis verticillata*
- Sweet pepper bush, *Clethra alnifolia*
- Blue-eyed grass, *Sisyrinchium angustifolium*
- Nodding onions, *Allium cernuum*
- Blue wild indigo, *Baptisia australis*
- Winterberry bushes, *Ilex verticillata*





# Buzzing visitors to May blooms

Blue false indigo,  
*Baptisia australis*

Spiderwort,  
*Tradescantia virginiana(?)*



# May



Wild bleeding heart,  
*Dicentra eximia*



Wild geranium, *geranium  
maculatum* behind Green & gold

# Video

Bumblebee and honeybee

False indigo bush,  
*Amorpha fruticosa*

May



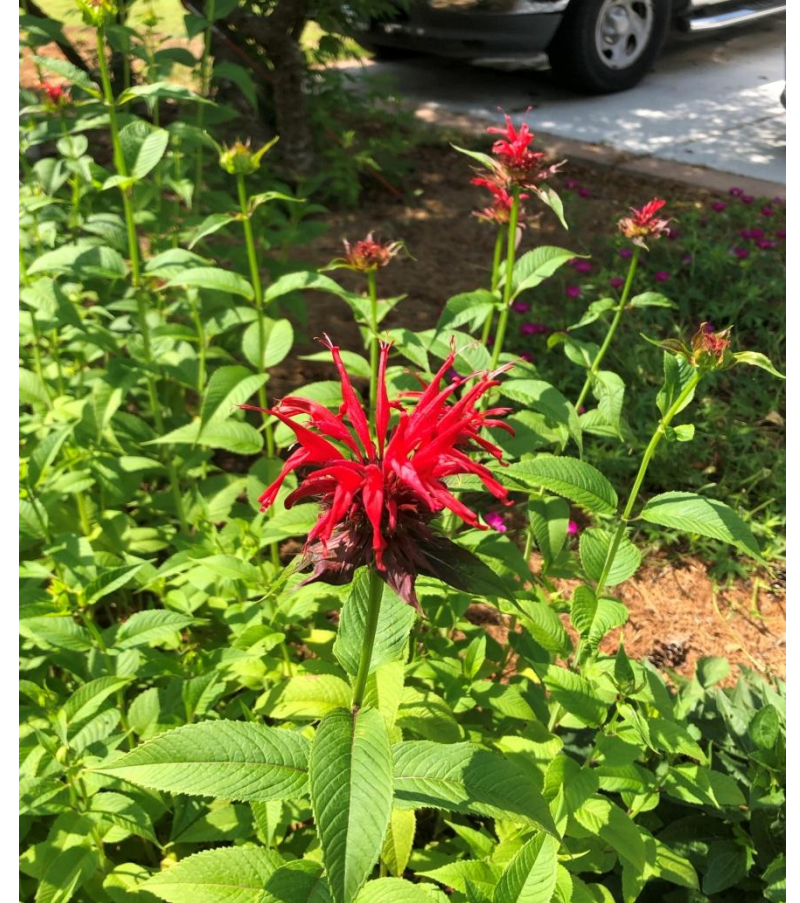
# May activity



Monarch caterpillar  
common milkweed,  
*Asclepias syriaca*



Bumblebee  
Purple coneflower,  
*Echinacea purpurea*



Bee balm, *Monarda didyma*  
attracts hummingbirds  
(difficult to catch on cellphones)

# Video

Honeybees

Southern arrowwood,  
*Viburnum dentatum*

May 14



# Video

Bumblebee

Beard tongue,  
*Penstemon digitalis*

May





# Backyard path to a gate June 2022

Winecups (purple poppy mallow),  
*Callirhoe involucrate*

Wax myrtle,  
*Myrica cerifera*

Oak-leaf hydrangea,  
*Hydrangea quercifolia*

# June A-Flutter



Common milkweed,  
*Asclepias syriaca*



Butterfly weed,  
*Asclepias tuberosa*





Wild  
bergamot,  
*Monarda  
fistulosa*

Winter bird  
feeders

Pollinator  
Pathway  
Sign



# Video

Pollinators

Narrow leaf Mountain Mint,  
*Pycnanthemum tenuifolium*,

June



# Rain Garden July 1

Native bees

Hardy Hibiscus,  
*Hibiscus mocheutos*,



Background:

Blue cardinal flower,  
*Lobelia siphilitica*

Sweet goldenrod,  
*Solidago odora* (drier area)

# Video

Honeybees

Mountain mint,  
*Pycnanthemum muticum*

July 4



**VIDEO** : Honeybees on Mountain Mint in July



July

Monarch butterfly

Joe Pye weed,  
*Eutrochium purpureum*

Screened-in back porch



**July**

Lance leaf coreopsis,  
*Coreopsis lanceolata*

Front porch walkway



# Video

Goldfinches eating seeds

Lance leaf coreopsis,  
*Coreopsis lanceolata*

View from front window

July 18







**July**

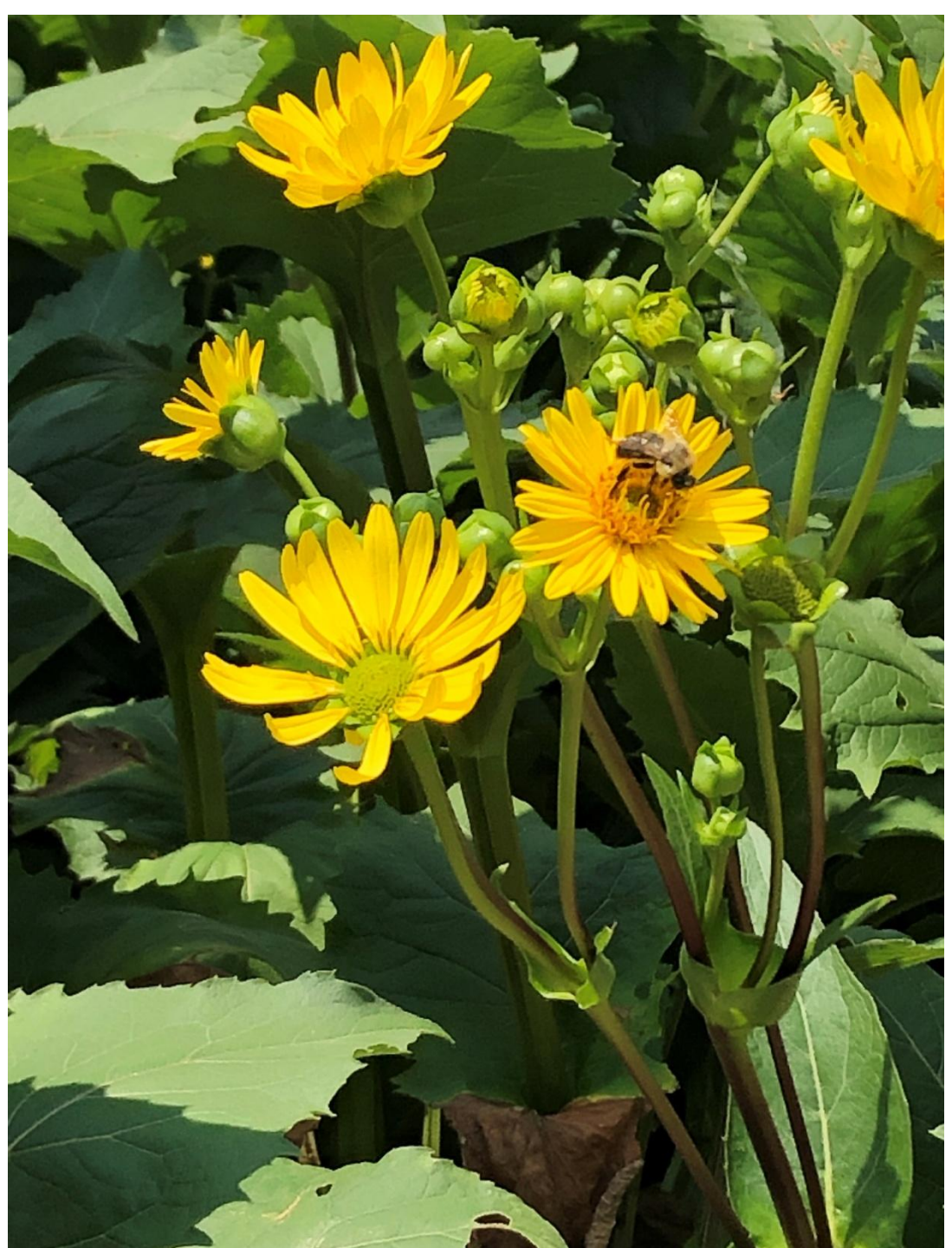
Rattlesnake master,  
*Eryngium yuccifolium*





# July

Cup plant,  
*Silphium*  
*perfoliatum*  
attracts  
multiple  
beneficial  
insects and  
birds for  
water and  
seeds



# July

Monarch butterfly

Purple coneflower,  
*Echinacea purpurea*



# Video

Bees and wasps

Sweet pepper bush,  
*Clethra alnifolia*

July 27



July 29

Tiger swallowtail butterfly

Button bush,  
*Cephalanthus occidentalis*



**July 28**

Monarch butterfly lays  
eggs

Swamp milkweed,  
*Asclepias incarnata*



# Rain Garden, July 28

Black-eyed susans,  
*Rudbeckia hirta*

Hollow Joe pye weed,  
*Eutrochium fistulosum*

Blue mist flower,  
*Conoclinium coelestinum*

Creek sedge,  
*Carex amphibola*





# July 29

Blue wing wasp,  
*Scolia dubia*

- Digger wasps
- Lay eggs on Japanese beetle larvae in the ground that hatch and consume the larvae
- Non-aggressive, rarely ever sting
- Adults consume nectar and pollinate flowers

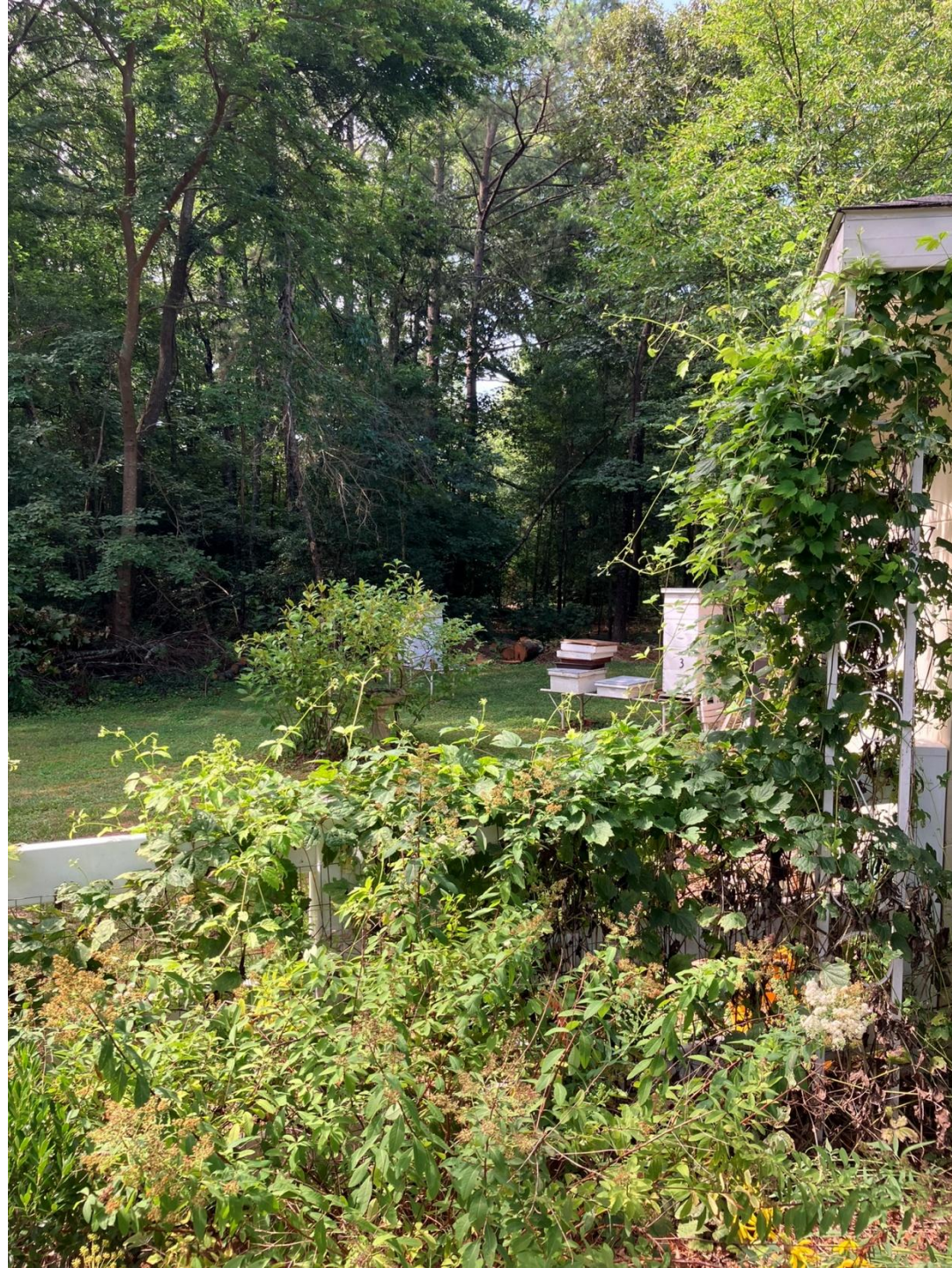
Mountain mint,  
*Pycnanthemum muticum*



Our Beehives

Behind garage

July 2023



Birdbath with drip  
system from A.C.  
runoff water





# Honeybees on Liatris, Blazing star in July





Bees on hyssop in July







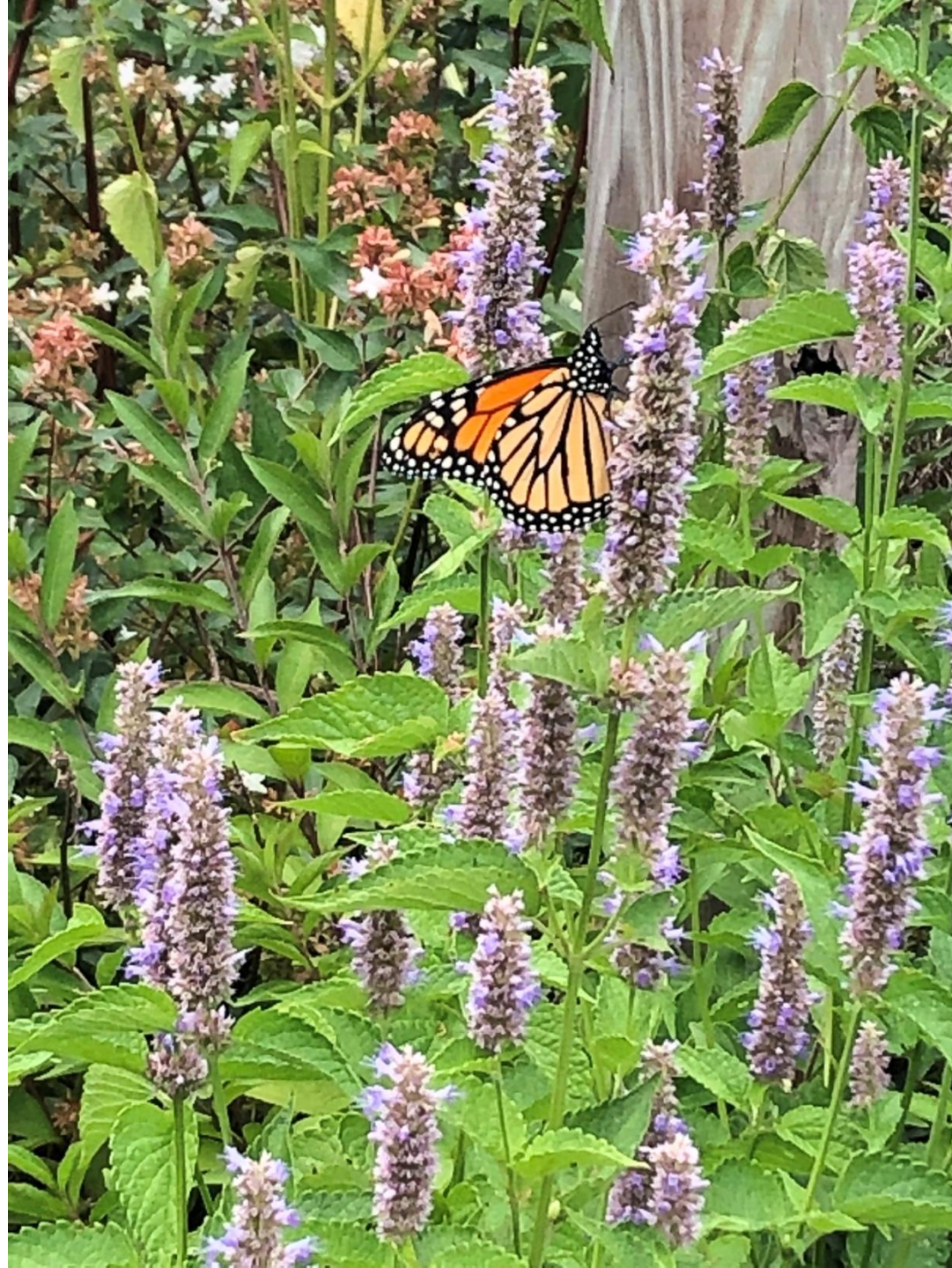
Honeybee on American beautyberry, *Callicarpa americana* in July



# August

Monarch butterfly

Anise hyssop,  
*Agastache foeniculum*





# August 2022

My dog, Muffin, hides  
from her visitor.

Orange coneflower,  
*Rudbeckia fulgida*

Modified rain garden

# Modified Rain Garden, March 2020



Corrugated perforated pipes in a T shape divert roof runoff water into shallow ditches under the flower bed.

# Modified Rain Garden August 2022

Bedroom window

New York Ironweed,  
*Veronica noveboracensis*



# August

Vining native plant along fence

Old man's beard,  
*Clematis virginiana*



Flowers of Old man's beard at the end of September, hence the common name.

Old man's beard  
*Clematis virginiana*



# Video

Joe Pye weed,  
*Eutrochium purpurium*

New York Ironweed,  
*Veronica noveboracensis*

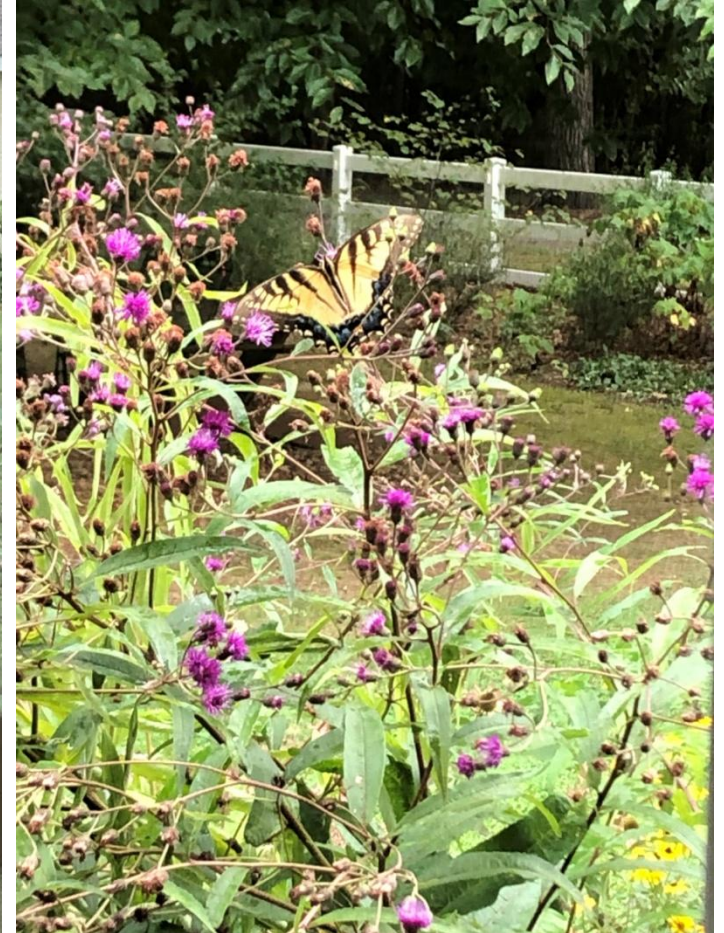
August 23





# August 25

Looking out bedroom window at yellow swallowtails on New York Ironweed





Bumble bee  
Obedient plant,  
*Physotesia virginiana*

**August**

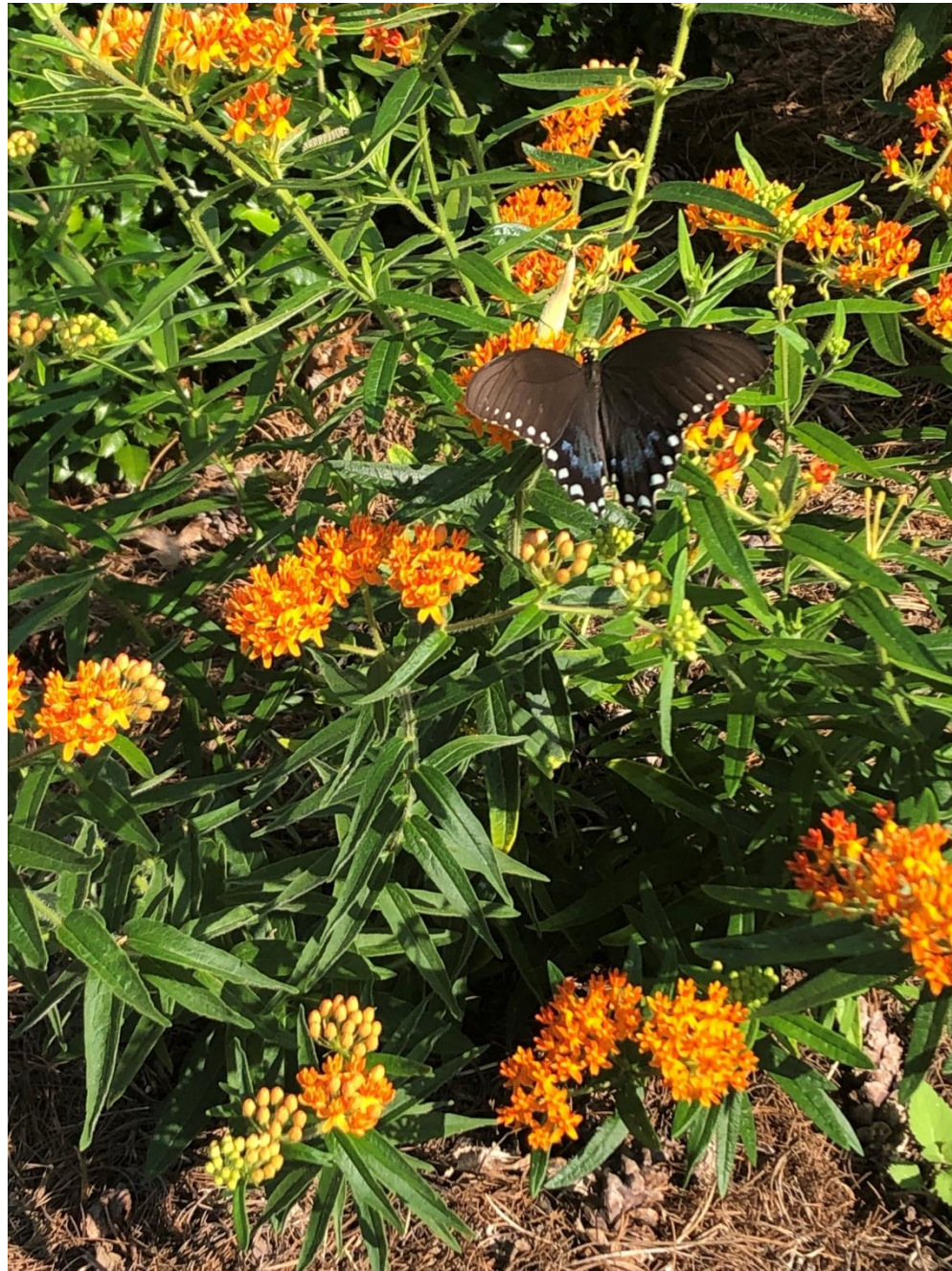


Black swallowtail  
Obedient plant

# August

Spicebush swallowtail  
butterfly

Butterfly weed,  
*Asclepias tuberosa*



# Video

Hummingbird

Red cardinal flower,  
*Lobelia cardinalis*

August 22





# August 29

Monarch butterflies and chrysalises raised in a butterfly cage

Releasing butterflies onto zinnias

Zinnias are non-aggressive and non-invasive natives of Mexico where the monarchs fly to overwinter.

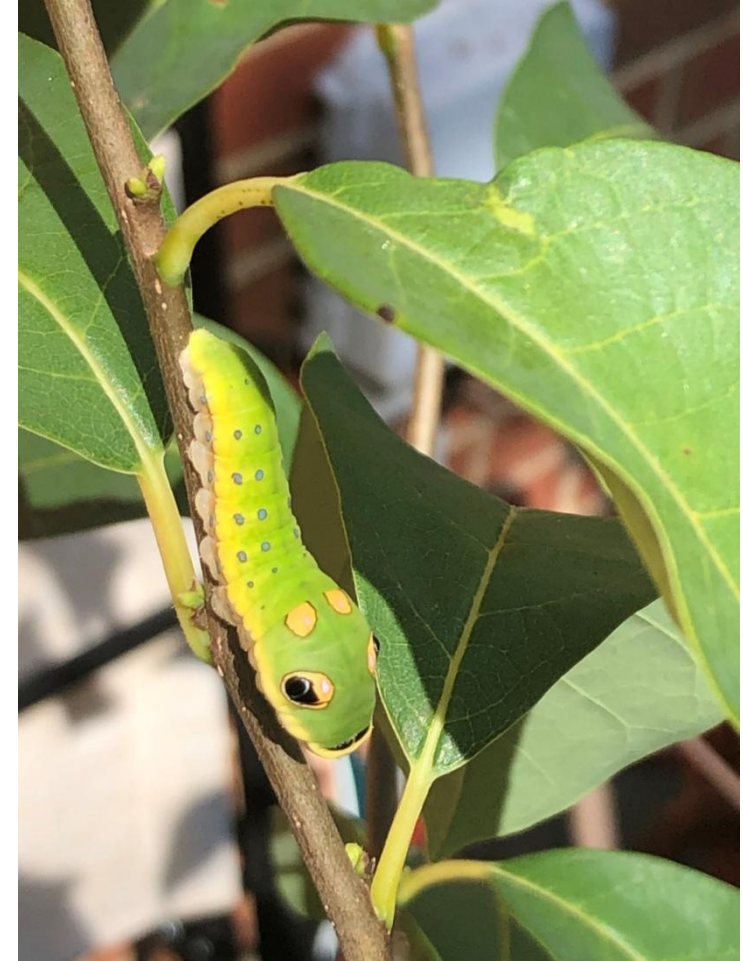


Zinnias return here every year from seeds dropped the previous year.  
Excellent food for monarchs preparing to fly to Mexico!

# September



Spicebush swallowtail  
caterpillar  
2 instars (stages of  
development)





# September

Spicebush swallowtail  
caterpillar

Final instar

Protective cage



# September

Pearl Crescent butterfly

Mountain mint,  
*Pycnanthemum muticum*



# September 23

Ocala skipper butterfly

Rough-stemmed Goldenrod,  
*Solidago rugosa*



# September 25

Rough-stemmed  
Goldenrod,  
*Solidago rugosa*

Large bush is  
Southern arrowwood,  
*Viburnum dentatum*.



# September

Monarch caterpillars

Common milkweed,  
*Asclepias syriaca*





**September**

Monarch butterfly  
chrysalises

Rush,  
*Juncus effusus*



Greater  
fritillary  
butterfly

Butterfly  
weed.





# October

New York asters,  
*Symphyotrichum novi-belgii*

**October**



Clouded sulphur  
butterfly



# Video

Honeybees

New York asters,  
*Symphyotrichum novi-belgii*

October



# Bushes with fall berries for winter bird food



Beautyberry  
*Callicarpa americana*



Winterberry  
*Ilex verticillata*



Mapleleaf viburnum  
*Viburnum acerifolium*



Flowering Dogwood,  
*Cornus florida*



Spicebush,  
*Lindera benzoin*



Inkberry,  
*Ilex glabra*

# November

Morning dew  
highlighting beautiful  
webs in the rain garden

Rush,  
*Juncus effusus*



# Video

Looking out my bedroom window at birds in the snow feeding on dried seed heads

New York ironweed,  
*Veronica noveboracensis*

February 1, 2021

This is why I do not remove dried native plant canes before spring. The seeds feed wildlife in winter.



# Local Sources of Native Plants

1. Beth Farmer, Garden Gate Landscape and Design
2. Bill Shanabruch, Reedy Creek Environmental
3. Ashland Farmers' Market, Ashland Town Hall, Saturdays, 9:00-12:00
4. Davis Natives, Hanover County

# Valuable Source Books

- ***Bringing Nature Home*** by Doug W. Tallamy
- ***Pollinators of Native Plants*** by Heather Holm
- ***Raising Butterflies in the Garden*** by Brenda Dziedzic
- ***The Living Landscape, Designing for beauty and biodiversity in the home garden***  
by Rick Darke & Doug Tallamy
- ***Nature's Best Hope*** by Douglas Tallamy